

# PRODUCT DATASHEET

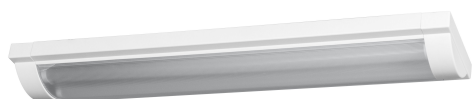
## LED Office Line DIM 0.6M 25W 4000K

LED OFFICE LINE DIM | Dimmable luminaire for ceiling and pendant mounting

---

### Areas of application

- Indoor applications
- Home offices
- General indoor illumination
- Kitchens, workspaces



---

### Product benefits

- Energy savings thanks to dimming in three steps
- Flexible mounting options
- Functional and minimalistic design

---

### Product features

- Replacement for traditional T8 luminaires
- For ceiling mounting or pendant mounting
- Material: Aluminium (Housing), Polycarbonate (Diffusor)
- Lifetime up to 25,000 h
- Click-DIM version: dimmable in three steps by repeated switching
- Lengths available: 0.6 m, 1.2 m
- Color temperature: 4,000 K





TECHNICAL DATA

Electrical data

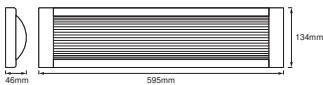
Nominal wattage	25.00 W
Nominal voltage	220...240 V
Mains frequency	50...60 Hz
Nominal current	111.000 mA
Power factor $\lambda$	> 0.90
Protection class	I
Operating mode	Mains voltage

Photometrical data

Luminous flux	2000 lm
Luminous efficacy	80 lm/W
Color temperature	4000 K
Light color (designation)	Cool White
Color rendering index Ra	$\geq 80$
Standard deviation of color matching	< 6 sdcm
Beam angle	105 °

Dimensions & Weight

Length	595.00 mm
Width	134.00 mm
Height	46.00 mm
Product weight	799.00 g



LED Office Line DIM 0.6 25W/840

Materials & Colors

Product color	White
Housing color	White
Body material	Aluminum

Mercury content	0.0 mg
-----------------	--------

### Application & Mounting

Ambient temperature range	-20...+40 °C
Type of connection	Screw terminal
Type of protection	IP20
Dimmable	Yes
Mounting type	Surface
Mounting location	Ceiling
Application environment	Indoor
With light source	Yes
Replaceable light source	No

### Lifespan

Lifespan L70/B50 at 25 °C	25000 h <sup>1)</sup>
Number of switching cycles	25000

<sup>1)</sup> t[h]: L70 / B50 @ 25 °C (Ta), t[h]: L80 / B10 @ 25 °C (Ta), t[h]: L90 / B10 @ 25 °C (Ta)




### Certificates & Standards

Standards	CE / EAC
Luminaire with limited surface temperature, "D sign"	No
Replaceable light source (EPREL)	Not replaceable

### EQUIPMENT / ACCESSORIES

– Pendant mounting accessory included

### DOWNLOAD DATA

Documents and certificates		Document name
	User instruction / safety instructions	LED OFFICE LINE
	Legal information	Legal insert B-not dimmable
	Declarations of conformity	CE Declaration LED Office Line Dim

LOGISTICAL DATA

Product code	Packaging unit (Pieces/Unit)	Dimensions (length x width x height)	Gross weight	Volume
4058075271500	Folding box 1	51 mm x 141 mm x 771 mm	896.00 g	5.54 dm <sup>3</sup>
4058075271517	Shipping box 8	760 mm x 300 mm x 225 mm	7736.00 g	51.30 dm <sup>3</sup>

The mentioned product code describes the smallest quantity unit which can be ordered. One shipping unit can contain one or more single products. When placing an order, for the quantity please enter single or multiples of a shipping unit.

DISCLAIMER

Subject to change without notice. Errors and omission excepted. Always make sure to use the most recent release.