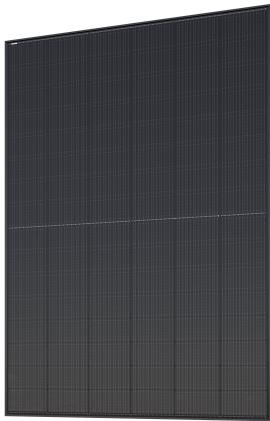


# PRODUCT DATASHEET

## M 445 N 48 RB-BB-F7

PV PANELS N-TYPE BIFACIAL FULL BLACK | TopCon bifacial photovoltaic panels in full black version



### Areas of application

- Commercial and industrial installations
- Residential installations

### Product benefits

- TopCon technology provides higher efficiency due to better sunlight conversion than standard panels
- Glass-glass modules offer improved protection against moisture, mechanical loads and fire protection
- 25-years of product guarantee, 30-years of linear power output guarantee
- Limited PID-effect (potential induced degradation) thanks to strict quality control in production process
- Very low yearly degradation of the cells thanks to the better resistance to high temperatures
- Durable design and highest production standards guarantees operational reliability and quality

### Product features

- Bifacial - both sides of the panel are absorbing the light
- Original Stäubli MC4 EVO 2 connectors
- Available in a long cable version
- Frame made of anodized aluminum alloy
- Multi-bus bar (MBB) technology
- Maximum static load up to 5400 Pa

## TECHNICAL DATA

## ELECTRICAL DATA STC

Maximum Power Pmax (STC)	445 W
Maximum Power Current Imp (STC)	14.89 A
Short Circuit Current Isc (STC)	15.99 A
Maximum Power Voltage Vmp (STC)	29.91 V
Open Circuit Voltage Voc (STC)	35.02 V
Module efficiency factor (STC)	22,27 %

## ELECTRICAL DATA NMOT

Maximum Power Pmax (NMOT)	335 W
Maximum Power Current Imp (NMOT)	12.00 A
Short Circuit Current Isc (NMOT)	12.90 A
Maximum Power Voltage Vmp (NMOT)	27.90 V
Open Circuit Voltage Voc (NMOT)	33.10 V

## ELECTRICAL DATA STC and NMOT

Power tolerance	3 %
-----------------	-----

## MECHANICAL DATA

Type of Faciality	Bifacial
Cell material	Mono crystalline
Number of cells	96
Number of bypass diodes	3
With frame	Yes
Type of connection	Staubli MC4 EVO2
Width	1134 mm
Length	1762 mm
Height	30 mm
Product weight	24500.000 g
Cable length	1.2 m
Glass with anti-reflection coating	Yes
Colour cells	Dark blue
Colour frame	Full Black
Front Glass	2.0 mm coated semi-tempered glass
Back Glass	2.0 mm glazed semi-tempered glass

## TEMPERATURE RATINGS




Nominal operating cell temperature	45 °C
Temperature coefficient Isc	0.045 %/K

Temperature coefficient Pmpp	-0.290 %/K
Temperature coefficient Uoc	-0.260 %/K

## OPERATING CONDITIONS

Maximum series fuse rating	30 A
Temperature range in operation	-40...+85 °C
Front Side Maximum Static Loading	5400 Pa
Rear Side Maximum Static Loading	2400 Pa
Reverse current load	30 A

## DOWNLOAD DATA

Documents and certificates		Document name
	User instruction / safety instructions	PV MODULE
	Declarations of conformity	PV PANELS F7
	Product family datasheet	M435 455N48RB BB F7

## LOGISTICAL DATA

Product code	Packaging unit (Pieces/Unit)	Dimensions (length x width x height)	Gross weight	Volume
4058075850316	Unpacked 1	1,762 mm x 1,134 mm x 30 mm	24500.00 g	59.94 dm <sup>3</sup>
4058075850323	Shipping box 36	1,774 mm x 1,100 mm x 1,130 mm	905000.00 g	2205.08 dm <sup>3</sup>

The mentioned product code describes the smallest quantity unit which can be ordered. One shipping unit can contain one or more single products. When placing an order, for the quantity please enter single or multiples of a shipping unit.

## References / Links

– For Guarantee see [www.ledvance.com/guarantee](http://www.ledvance.com/guarantee)

## DISCLAIMER

Subject to change without notice. Errors and omission excepted. Always make sure to use the most recent release.