

PRODUCT DATASHEET

PL-CUBE-AC -G4-3000-830

PrevaLED® Cube AC G4 | Spot-, Down- and Wallmount Light Engines and Modules



Areas of application

- Suitable for diffuser and reflector luminaires
- Hospitality, hotels, restaurants
- Public and commercial buildings
- Offices
- Secondary rooms, garages, storerooms, cellars

Product benefits

- Enables low-cost and compact luminaire designs
- Low profile
- Future-proof dimensions for reliable designs
- Near Lambertian light distribution at 110° beam angle for high quality of light
- Protection against overheating due to thermal derating
- 5 year guarantee

Product features

- Mains voltage driven LED engine
- Integrated control gear
- Diameter of light emitting surface: 61 mm
- Common mechanic and photometric interfaces

- Initial color consistency: < 3 SDCM
- Lifetime (L70/B50): 50,000 h (temperature at $T_c = 70\text{ °C}$)
- LED module is reinforced isolated to mounting surface
- Photobiological safety according to IEC/TR 62778, risk group RG1

TECHNICAL DATA

Electrical data

Nominal wattage	28.50 W
Construction wattage	28.50 W
Nominal voltage	230 V
Input voltage range	220...240 V
Type of current	AC
Nominal current	125.000 mA
Flickering metric (Pst LM)	≤1

Photometrical data

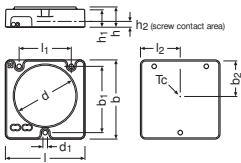
Luminous efficacy	109 lm/W
Luminous flux	2460 lm ¹⁾
Luminous intensity	1124 cd
Flickering metric (Pst LM)	≤1
Color temperature	3000 K
Color rendering index Ra	80
Light color LED	Warm White
Light color (designation)	Warm White
Standard deviation of color matching	≤3 sdcm
Rated peak intensity	1124 cd
Stroboscope effect metric (SVM)	≤0.9

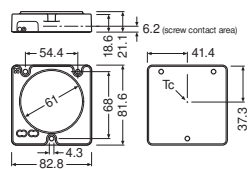
1) 120 °

Light technical data

Beam angle	110 °
Starting time	< 0.1 s
Warm-up time (60 %)	< 2.00 s

Dimensions & Weight





Length	82.80 mm
Width	81.60 mm
Height	21.10 mm
Product weight	60.00 g

Colors & materials

Product color	White
---------------	-------

Temperatures & operating conditions

Ambient temperature range	-20...+50 °C ¹⁾
Maximum temperature at tc test point	90 °C
Temperature range in operation	-20...90 °C ²⁾
Performance temp. acc. to IEC 62717	70 °C

1) T_a(rated) = 25 °C

2) At the T_c point

Lifespan

Nominal lamp life time	50000 h
Number of switching cycles	100000

Capabilities

Dimmable	No
----------	----

Certificates & Standards

Standards	CE / ENEC
Type of protection	IP20
Energy consumption	28.50 kWh/1000h
Energy efficiency class	F
Energy class of contained light source	F



LOGISTICAL DATA

Temperature range at storage	-20...85 °C
------------------------------	-------------

Energy labelling regulation data acc EU 2019/2015

Lighting technology used	LED
--------------------------	-----

DOWNLOAD DATA

Documents and certificates		Document name
	User instruction / safety instructions	20486769 PrevaLED Cube-AC G4
	Certificates	PL-CUBE-AC -G4-1100-830

LOGISTICAL DATA

Product code	Packaging unit (Pieces/Unit)	Dimensions (length x width x height)	Gross weight	Volume
4062172239530	Unpacked 1			
4062172239547	Shipping box 20	481 mm x 393 mm x 51 mm	1432.00 g	9.64 dm ³

The mentioned product code describes the smallest quantity unit which can be ordered. One shipping unit can contain one or more single products. When placing an order, for the quantity please enter single or multiples of a shipping unit.

DISCLAIMER

Subject to change without notice. Errors and omission excepted. Always make sure to use the most recent release.